



406 S. NEPTUNE DRIVE,
SATELLITE BEACH, FLORIDA 32937
PHONE (321) 389-8787

COPYRIGHT
 All reports, plans, specifications, computer files, field data, notes and other documents are instruments of service prepared by CAG Architects, LLC (C.A.G.) as instruments of service remain the property of C.A.G. C.A.G. shall retain all common law, statutory and other reserved rights, including the copyright thereto. Any use or reproduction of this document without written permission from C.A.G. is a violation of Federal copyright laws.

Archila
Design
GROUP
ARCHITECTURE

923 San Rafael Rd. SW
Palm Bay, FL 32908
PHONE: (561) 504-4240

1602 N. RIVERSIDE DR.
TRIPLEX

POMPANO BEACH, FL.
BROWARD COUNTY, FLORIDA

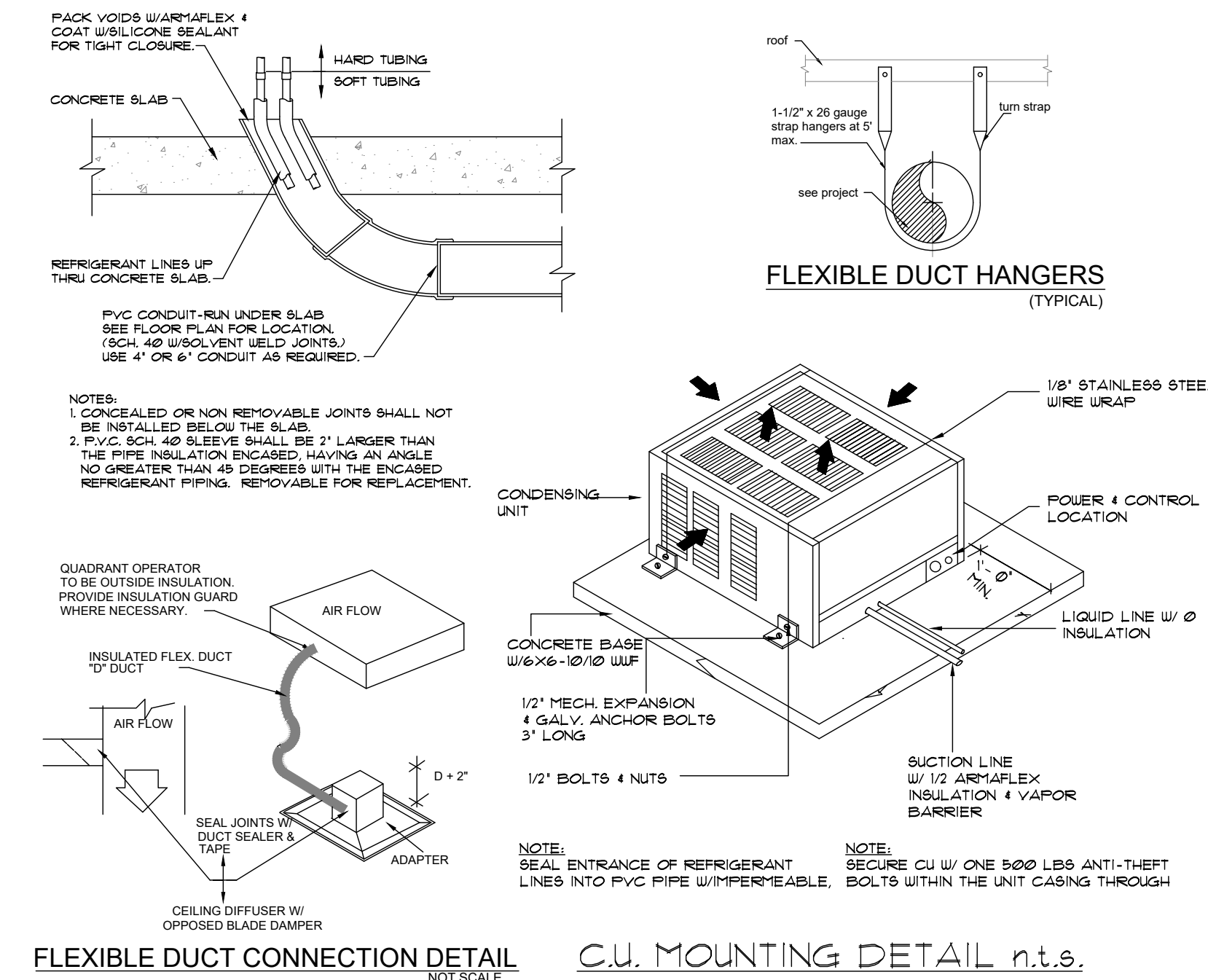


UNIT A MECHANICAL PLAN

Project Manager:
OSCAR
Drawn by: G.R.
Project No.: 24-925

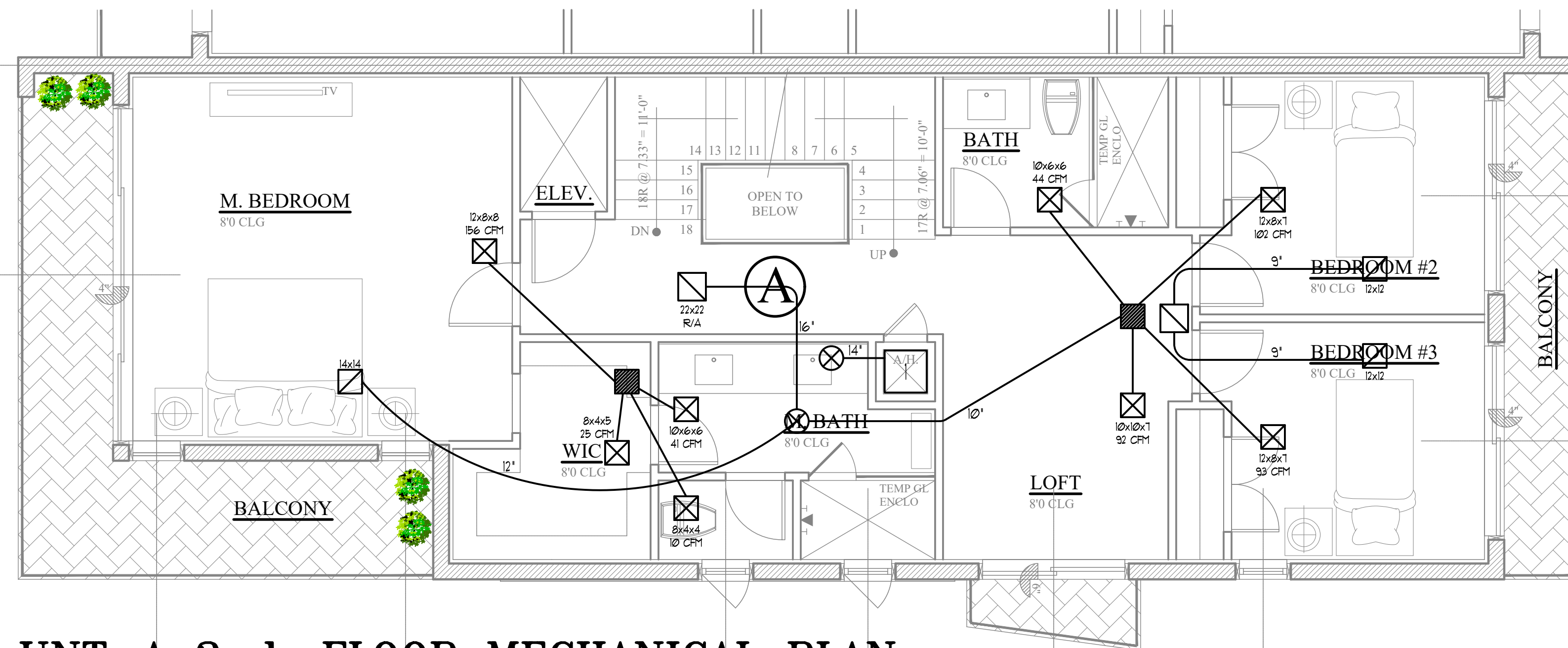
10/03/2024

M-1



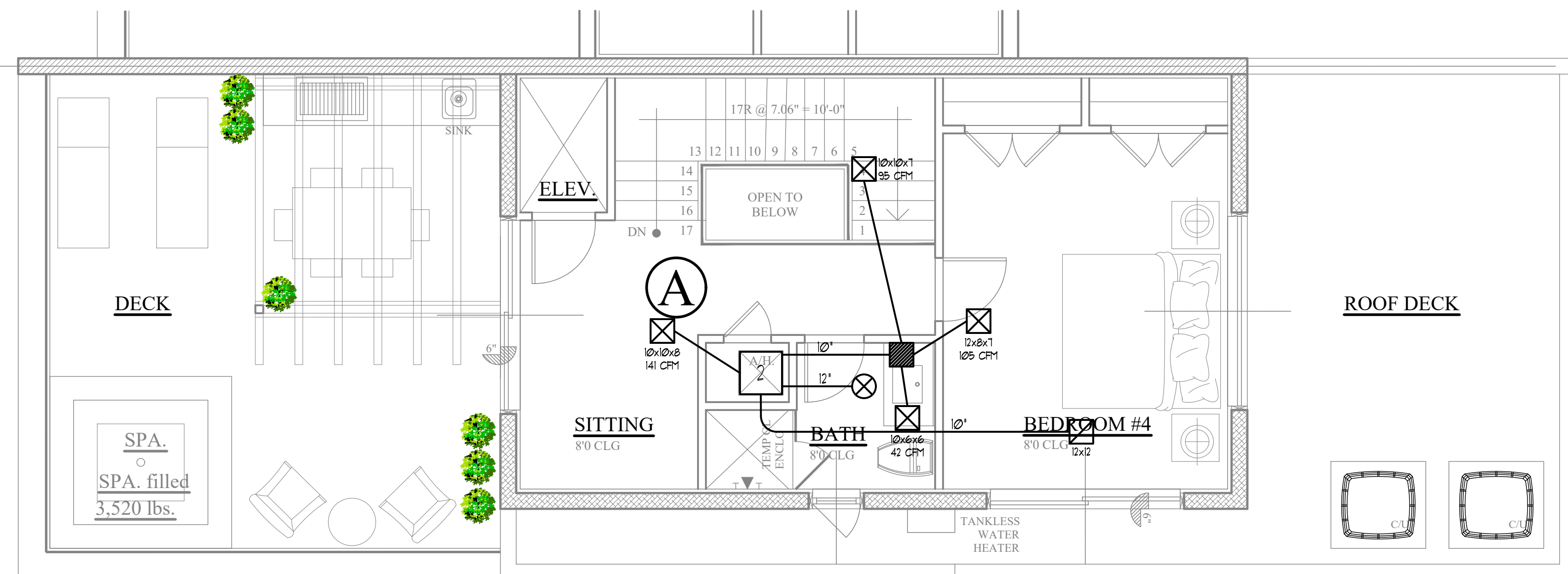
UNT-A 1st. FLOOR MECHANICAL PLAN

SCALE: 1/4" = 1'-0"



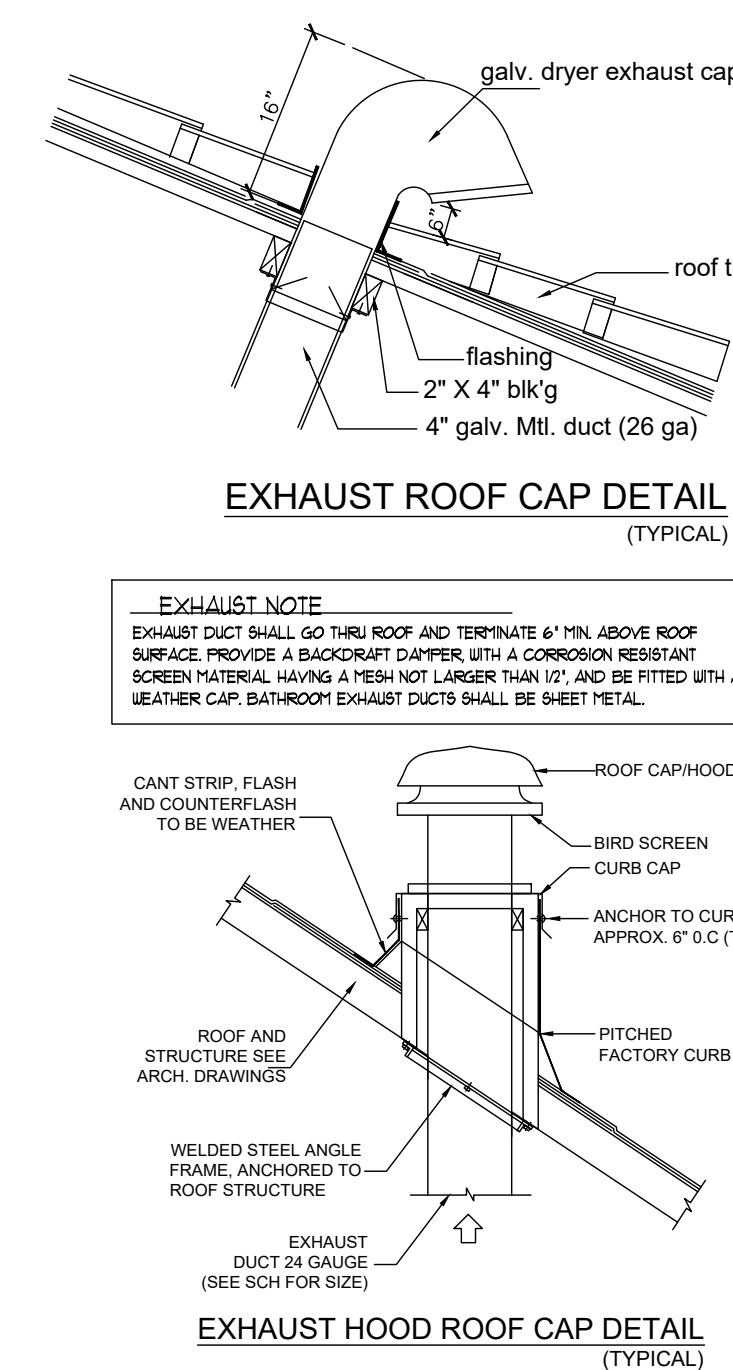
UNT-A 2nd. FLOOR MECHANICAL PLAN

SCALE: 1/4" = 1'-0"



UNT-A 3rd. FLOOR MECHANICAL PLAN

SCALE: 1/4" = 1'-0"



A/C NOTE:
-A/C MUST HAVE PROGRAMMABLE THERMOSTAT
-DUCTWORK INSULATION R-6

A/C STATIC PRESSURE
125" S.F. WATER GAUGE

AUXILIARY DRAIN PAN
AUXILIARY DRAIN PAN SHALL HAVE A MINIMUM OF 18" WIDE AND 18" DEEP AND SHALL NOT BE LESS THAN 3' LARGE. THE PAN SHALL BE 18" WIDE AND 18" DEEP. THE PAN SHALL BE OF NOT LESS THAN 24 GAUGE GALVANIZED STEEL.

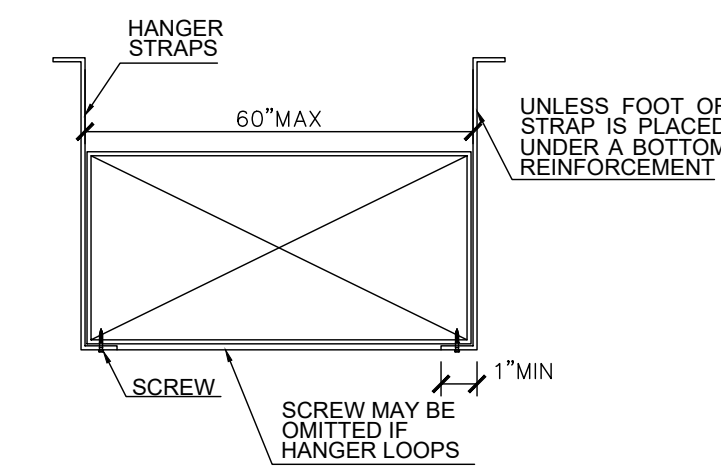
BATHROOM EXHAUST
BATHROOM EXHAUST DUCT SHALL
TERMINATE 6" MIN. ABOVE ROOF S
BACKDRAFT DAMPER, WITH A CO
SCREEN MATERIAL HAVING A MESH NO
AND BE FITTED WITH A WEATHER
EXHAUST DUCTS SHALL BE SHEET ME

EXHAUST FAN SCHEDULE		
UNIT SYMBOL	EF-1	EF-2
LOCATION	KITCHEN	BATHROOMS
MANUFACTURE	BROAN	BROAN
MODEL	EW5030SS	XB50
TYPE	ROOF	CEILING
FAN-CFM	500	50
DUCT SIZE	6"	4"
DAMPER INCLUDED	YES MOUNT & AUTOMATIC MAKE-UP AIR DAMPER	N/A
VOLTS	120	120
AMPS	2.88	0.3
SONES	0.5 TO HIGH 2.5 LOW	<0.3

GENERAL H.V.A.C. NOTES:

1. THE CONTRACTOR SHALL FURNISH ALL LABOR MATERIAL AND EQUIPMENT FOR A COMPLETE HVAC SYSTEM IN ACCORDANCE WITH THE FOLLOWING DRAWINGS, SPECIFICATIONS, CODES AND THE LATEST EDITION OF THE FOLLOWING PUBLICATIONS:
- A) AND ASHRAE MECHANICAL REFRIGERATION
- B) NFPA HAZARDOUS MATERIALS SECTION 419
- C) ASHRAE
- D) SASHRAE
2. ALL AIR CONDITIONING DUCTWORK SHALL BE 1-1/2 INCH STANDARD DUCTY FOLI REINFORCED FIBERGLASS WITH INSULATION. THE LOWEST LOGICALLY FEASIBLE DUCT SIZE SHALL BE USED. DUCT SIZE SHALL BE NET FREE AREA.
3. ALL AIR DEVICES (DIFFUSERS, REGISTERS AND GRILLES) SHALL BE OF THE CORRECT TYPE AND MATERIAL. EXPOSED SURFACES CHEMICALLY TREATED TO RECEIVE PAINT TO MATCH COLOR OF SURFACE. OR APPROVED EQUIVALENT.
4. PROVIDE OPPOSED BLADE DAMPERS AT ALL DIFFUSERS AND REGISTERS.
5. PROVIDE TURNING VANS AND EXTRACTORS ALL ELBOWS AND TAKE OFF.
6. FAN MATERIALS SHALL BE COMBINATION COOLING/HEATING SYSTEM COOLANT/HEAT/OF AND FAN AUTO SELECTOR SWITCHES.
7. FAN SHALL BE MOUNTED ON A STRUCTURAL STEEL BASE OR WOOD FRAME WITH CONTINUOUS STRIP OF ISOPRENE ADHESIVE. THE UNDERSIDING SHALL BE ANCHORED TO ITS BASE PER MANUFACTURER'S SPECIFICATIONS.
8. REFRIGERANT PIPING SHALL BE COPPER TYPE 1, LATEX/ARLX. ALL PIPING SHALL BE PROTECTED FOR SUCTION LINES.
9. PROVIDE NEW FILTERS FOR FAN COIL BEFORE STARTING THESE FILTERS MUST ALSO BE REPLACED PRIOR TO FINAL ACCEPTANCE BY OWNER.

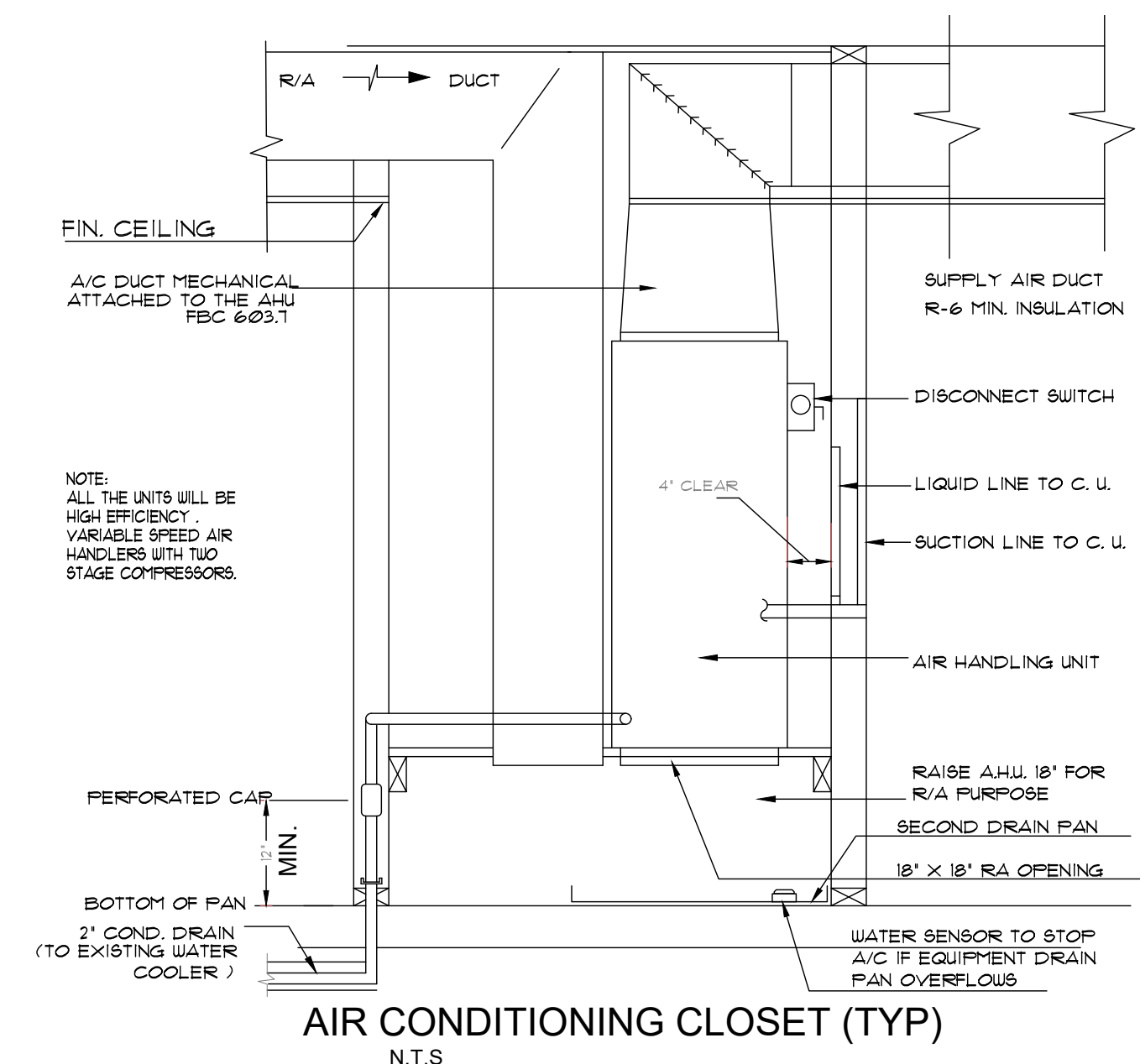
HVAC DESIGN REQUIRES	YES	NO
DUCT SMOKE DETECTOR		✓
FIRE DAMPER(S)		✓
SMOKE DAMPER(S)		✓
FIRE RATED ENCLOSURE		✓
FIRE RATED ROOF/FLOOR CEILING ASSEMBLY		✓
FIRE STOPPING		✓
SMOKE CONTROL		✓



RIGIT DUCT DETAIL

NOT SCALE

AREA CALCULATION: A	
1st FLOOR - A/C	1,099 S.F.
2nd FLOOR - A/C	1,094 S.F.
3rd FLOOR - A/C	588 S.F.
TOTAL - A/C:	2,781 S.F.
<hr/>	
GARAGE	219 S.F.
ENTRY	43 S.F.
PATIO	65 S.F.
BALCONY 1	155 S.F.
BALCONY 2	64 S.F.
BALCONY 3	18 S.F.
UPPER DECK	835 S.F.
ROOF	588 S.F.
SUB-TOTAL:	1,987 S.F.
<hr/>	
GRAND TOTAL:	4,768 S.F.



AHU NOTE:

AHU NOTE:
AHU CLOSET COMPLY WITH FBCR M 1305.11 FURNACES AND AIR HANDLERS FURNACES AND AIR HANDLERS WITHIN COMPARTMENTS OR ALCOVES SHALL HAVE A TOTAL WIDTH OF THE ENCLOSING SPACE BEING AT LEAST 12 INCHES WIDER THAN THE FURNACE OR AIR HANDLER